

Sweater

My Patterns for Sweaters

- [Stone Cables](#)
- [Winter Love](#)

Stone Cables

Preview



Pattern

Materials

Wool

- 550g Yarn Group C

Needles

- 5mm circular: 40cm & 80cm
- 4mm circular: 40cm & 80cm
- 5mm double pointed
- 4mm double pointed

KNITTING TENSION:

17 stitches in width and 22 rows in height with stocking stitch = 10 x 10 cm.

Pattern instructions

Patterns

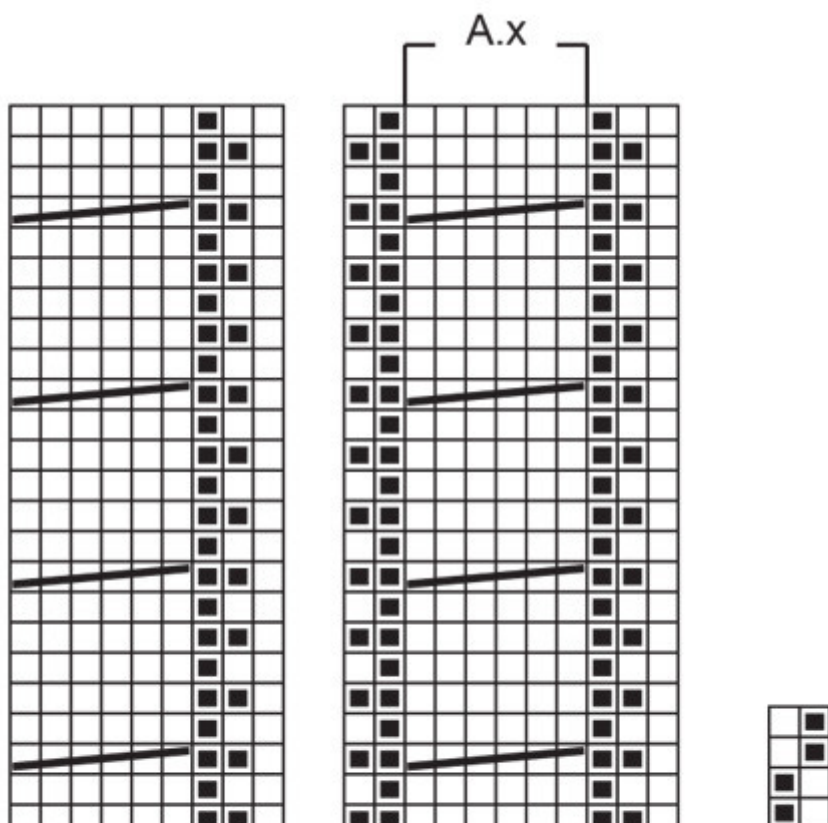
■ = knit

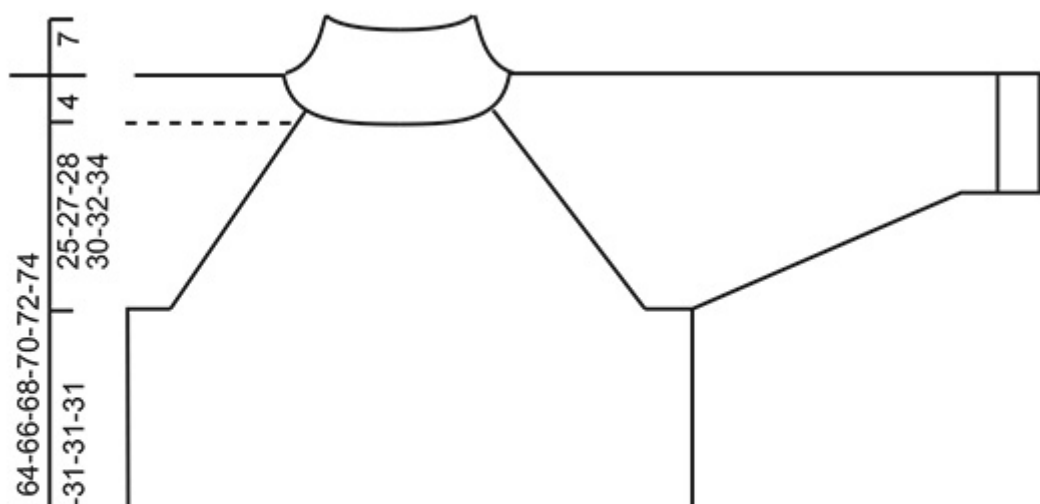
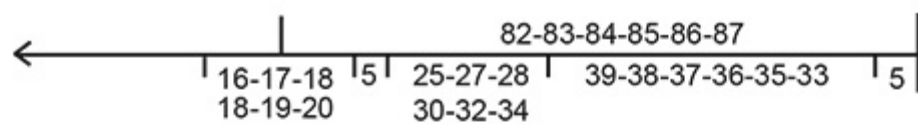
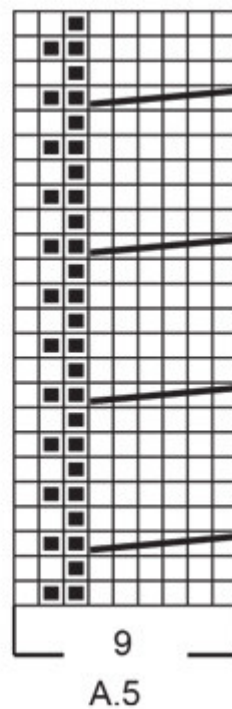
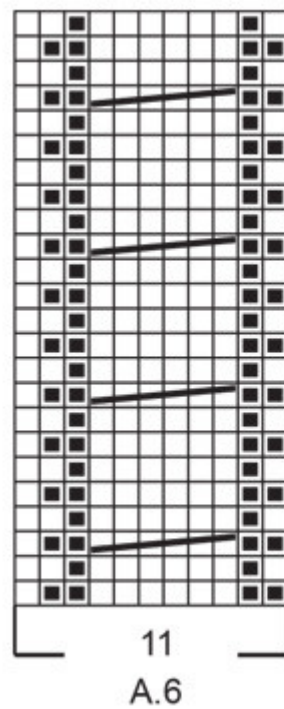
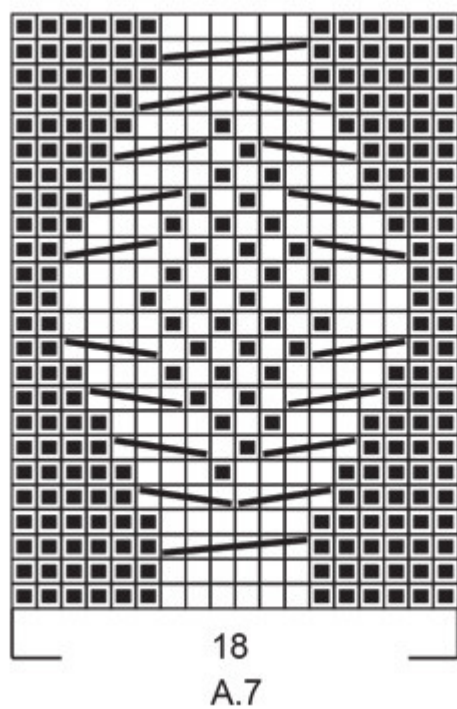
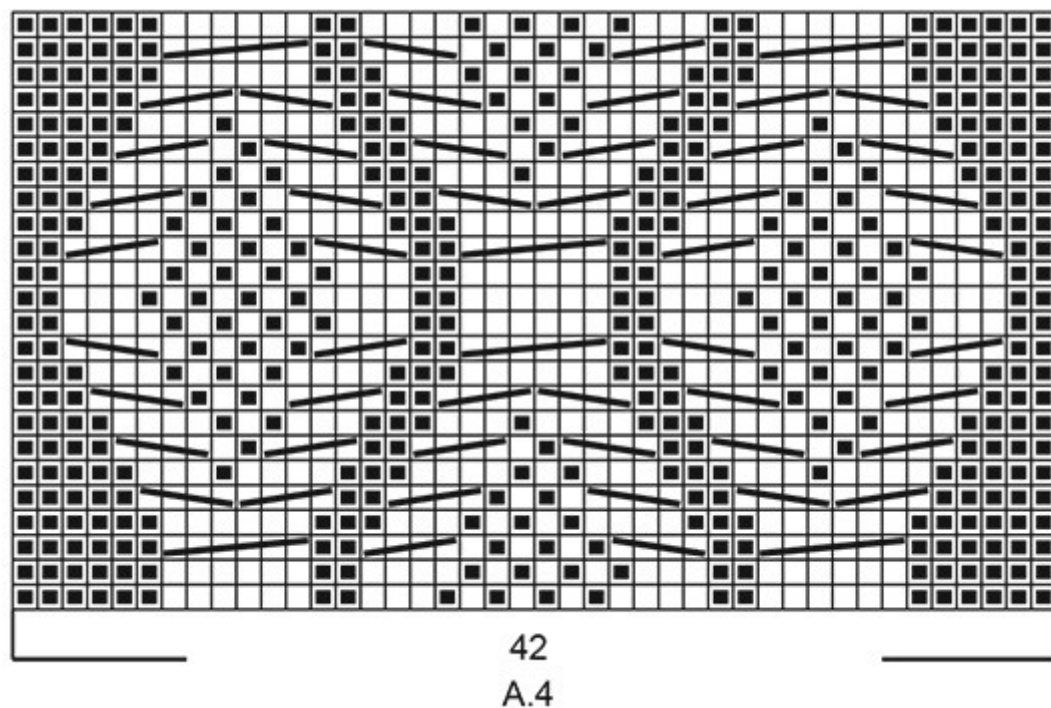
▣ = purl

 = place 3 stitches on cable needle behind the piece, knit 3 and knit 3 from cable needle

 = place 1 stitch on cable needle behind the piece, knit 3 and purl 1 from cable needle

 = place 3 stitches on cable needle in front of piece, purl 1 and knit 3 from cable needle





Decrease/Increase Tip

To work out how to decrease/increase evenly, count the total number of stitches on needle (e.g. 224 stitches), and divide by number of decreases/increases to be made (e.g. 20) = 11.2. In this example, decrease by knitting together approx. each 10th and 11th stitch.

When increasing, make 1 yarn over after approx. each 11th stitch. On the next round work the yarn overs twisted to avoid holes.

Raglan

Decrease to raglan on each side of the marker thread in each transition between body and sleeves as follows: Work until there are 3 stitches left before the marker thread, knit 2 together, knit 2 (marker thread sits between these 2 stitches), slip 1 stitch as if to knit, knit 1 and pass the slipped stitch over the knitted stitch (8 stitches decreased on each decrease-round). NOTE! When you no longer have room for a complete cable towards the raglan-line, work those stitches in stocking stitch.

Increase Tip

Increase 1 stitch on each side of the marker-stitch as follows: Work to the marker-stitch, make 1 yarn over, knit 1 (marker-stitch), 1 yarn over. On the next round knit the yarn overs twisted to avoid holes. Then work the new stitches into A.1.

Knitting Tip

When casting off for the armholes on the body and sleeves, adjust to do this on the same row in pattern A.x on body and sleeve (single cables). So that all the of these cables can be work on the same round in the diagram as you continue onwards.

Instructions

Overview

The body is worked in the round, bottom up as far as the armholes. The sleeves are worked in the round with double pointed needles/short circular needle, bottom up. The sleeves are placed on the same circular needle as the body, and the yoke is finished in the round. The double neck is worked

to finish.

Body

Cast on 224/232/250/264/292/314 stitches with circular needle size 4mm.

Work rib in the round (knit 1, purl 1) for 5cm.

Change to circular needle size 5 mm and knit 1 round where you decrease 20/20/22/24/24/26 stitches evenly spaced = 204/212/228/240/268/288 stitches. Continue according to the diagrams as follows: * Work A.1 over 20/24/32/38/30/40 stitches, A.2 over 11/11/11/11/22/22 stitches (= 1/1/1/1/2/2 repeats of 11 stitches), A.3 (= 9 stitches), A.4 (= 42 stitches), A.5 (= 9 stitches), A.6 over 11/11/11/11/22/22 stitches (= 1/1/1/1/2/2 repeats of 11 stitches) *, work from *-* a total of 2 times.

Insert a marker in the middle of both sections of A.1 (10/12/16/19/15/20 stitches of A.1 on each side).

Remember the knitting Tension!

Continue the pattern until the piece measures 35/35/36/36/36/36cm from the cast-on edge - read knitting Tip!

On the next round cast off 3/3/4/4/5/5 stitches for the armholes on each side of both markers (6/6/8/8/10/10 stitches for each armhole). There are 96/100/106/112/124/134 stitches on the front piece and back pieces. Lay the piece to one side and work the sleeves.

Sleeves

Cast on 48/48/50/50/52/54 stitches with double pointed needles size 4mm. Work rib in the round (knit 1, purl 1) for 5cm. Change to double pointed needles size 5mm and knit 1 round where you increase 6/6/6/8/8/8 stitches evenly spaced - remember Decrease/Increase Tip = 54/54/56/58 /60/62 stitches.

Insert 1 marker in the first stitch on the round; used when increasing under the sleeve.

Continue according to the diagrams as follows:

Work A.1 over 9/9/10/11/12/13 stitches, A.3 (= 9 stitches), A.7 (= 18 stitches), A.5 (= 9 stitches) and A.1 over the last 9/9/10/11/12/13 stitches.

When the sleeve measures 8cm from the cast-on edge increase 1 stitch on each side of the marker-stitch - read Increase Tip in explanations above.

Repeat this increase every 6,5/4,5/3/3/2,5/2cm a total of 6/8/11/11/13/15 times = 66/70/78/80 /86/92 stitches.

Continue working until the sleeve measures 44/43/42/41/40/38cm from the cast-on edge (shorter measurements in larger sizes due to wider neck and longer yoke). There is approx. 25/27/28/30 /32/34cm left before the neck; try the jumper on and work to desired length - remember Knitting Tip! Cast off 6/6/8/8/10/10 stitches mid-under the sleeve = 60/64/70/72/76/82 stitches.

Lay the piece to one side and work the other sleeve in the same way but insert the marker under the sleeve in the last stitch on the round.

Yoke

Place the sleeves on the same needle as the body, where stitches were cast off for the armholes = 312/328/352/368/400/432 stitches.

Insert 1 marker thread in each transition between body and sleeves (= 4 marker threads). The 2 stitches on each side of all the marker threads are worked in stocking stitch; the other stitches are worked as before. Continue the pattern for 4/4/2/4/2/1cm. Now continue the pattern and begin to decrease for RAGLAN – read description above.

Decrease like this every 2nd round a total of 22/24/27/28/32/35 times. When all the decreases are finished there are 136/136/136/144/144/152 stitches and the yoke measures approx. 24/26/27/29 /31/33cm from where the body and sleeves were joined.

On the next round continue the pattern but knit the cable-stitches and decrease stitches evenly as follows: Decrease a total of 6 stitches over the cables on the front piece and 3 stitches over the first sleeve, 6 stitches over the cables on the back piece and 3 stitches over the cables on the other sleeve = 118/118/118/126/126/134 stitches. Knit 1 round and decrease 36/32/30/38/34/38 stitches evenly on the round = 82/86/88/88/92/96 stitches.

The jumper measures approx. 64/66/68/70/72/74cm from the shoulder.

Double Neck

Change to short circular needle size 4mm and work rib (knit 1, purl 1) for 12 cm. On the next round increase stitches to avoid the neck being tight when folded double as follows: Make 1 yarn over after every second purled stitch = 102/107/110/110/115/120 stitches. Purl the yarn overs twisted on the next round to avoid holes. Continue with knit over knit and purl over purl until the neck measures 14cm. Loosely cast off with knit over knit and purl over purl.

Assembly

Sew together the openings under the sleeves. Fold the neck double to the inside and sew down. To avoid the neck being tight and rolling outwards, it is important that the seam is elastic.

This pattern has been corrected. [Click here to see the correction/s.](#)

Source

[Original Pattern](#)

Winter Love



Pattern

Materials

Wool

- 550g Yarn Group C

Needles

- 5,5mm circular: 40cm & 80cm
- 4,5mm circular: 40cm & 80cm

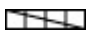




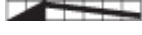








- 5,5mm double pointed
- 4,5mm double pointed

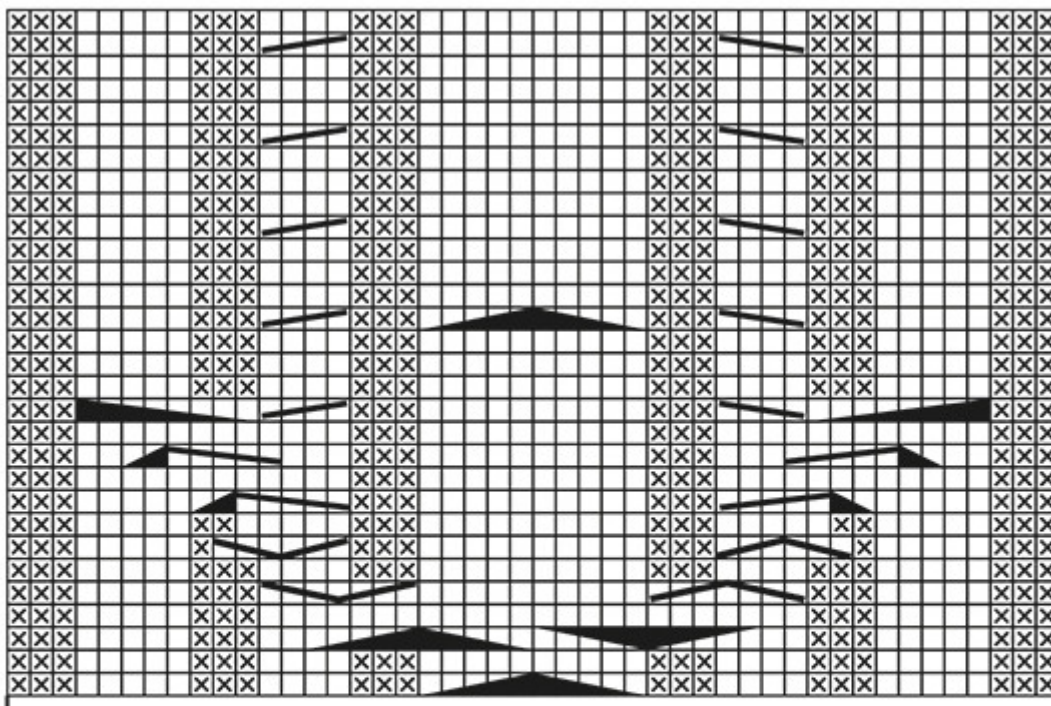
KNITTING TENSION:

17 stitches in width and 22 rows in height with stocking stitch = 10 x 10 cm.

Pattern instructions

Patterns

- [](<https://doku.dodekaeder.name/uploads/images/gallery/2024-08/qOFknit.jpg>) = knit
](<https://doku.dodekaeder.name/uploads/images/gallery/2024-08/scaled-1680-Wzlpurl.jpg>)](<https://doku.dodekaeder.name/uploads/images/gallery/2024-08/Wzlpurl.jpg>) = purl
 = slip 2 stitches on cable needle in front of piece, knit 2, knit 2 from cable needle
 = slip 2 stitches on cable needle behind piece, knit 2, knit 2 from cable needle
 = slip 5 stitches on cable needle in front of piece, knit 5, knit 5 from cable needle
 = slip 5 stitches on cable needle behind piece, knit 5, knit 5 from cable needle
 = slip 2 stitches on cable needle behind piece, knit 5, knit 2 from cable needle
 = slip 5 stitches on cable needle in front of piece, knit 2, knit 5 from cable needle
 = slip 2 stitches on cable needle behind piece, knit 5, purl 2 from cable needle
 = slip 5 stitches on cable needle in front of piece, purl 2, knit 5 from cable needle
 = slip 1 stitch on cable needle behind piece, knit 5, purl 1 from cable needle
 = slip 5 stitches on cable needle in front of piece, purl 1, knit 5 from cable needle
 = slip 3 stitches on cable needle behind piece, knit 5, purl 3 from cable needle
 = slip 5 stitches on cable needle in front of piece, purl 3, knit 5 from cable needle
 = between 2 stitches make a yarn over on needle, on next round/row purl yarn over twisted
 = between 2 stitches make a yarn over on needle, on next round/row knit yarn over twisted



Garter Stitch

See diagrams A.1 and A.2. Diagrams show all rows in pattern seen from the right side.

Decrease/Increase Tip

To calculate how to decrease/increase evenly, use the total number of stitches on row (e.g. 196 stitches) and divide stitches by number of decreases/increases to be done (e.g. 36) = 5.4. In this example knit approx. every 4th and 5th stitch together.

If an even increase should be done, do so by making a yarn over after alternately every 5th and 6th stitch. On next round knit yarn over twisted to avoid holes.

Increase Tip

Increase 1 stitch on each side of the marker-stitch as follows: Work to the marker-stitch, make 1 yarn over, knit 1 (marker-stitch), 1 yarn over. On the next round knit the yarn overs twisted to avoid holes. Then work the new stitches into A.1.

Knitting Tip

When casting off for the armholes on the body and sleeves, adjust to do this on the same row in pattern A.x on body and sleeve (single cables). So that all the of these cables can be work on the same round in the diagram as you continue onwards.

Cast-Off Tip

To avoid a tight cast-off edge you may use a needle 0,5 size larger.

Instructions

Overview

Worked in the round on circular needle up to armhole, then work front and back piece back and forth separately. Work sleeves in the round on double pointed needles/a short circular needle.

Body

Cast on 196/214/226/242/258/288 stitches on circular needle size 4,5mm with Air. Knit 1 round. Then work rib (= knit 1/purl 1) for 3cm. Switch to circular needle size 5.5 mm, knit 1 round while decreasing 36/42/42/42/42/48 stitches evenly - read Decrease/Increase Tip above = 160/172/184/200/216/240 stitches. Insert 1 marker at beginning of round and 1 marker after 80/86/92(100)/108/120 stitches (= the sides) and move the markers upwards when working.

Work pattern as follows: Work 23/26/29/33/37/43 stitches in stocking stitch, A.1 (= 34 stitches), work in stocking stitch over the remaining 103/112/121/133/145/163 stitches. When entire A.1 has been worked vertically, there are 172/184/196/212/228/252 stitches on round. Remember the knitting Tension!

Now work pattern as follows: Work 23/26/29/33/37/43 stitches in stocking stitch, A.2 (= 46 stitches), work in stocking stitch over the remaining 103/112/121/133/145/163 stitches. Continue pattern like this and repeat A.2 vertically until finished measurements. At the same time when piece measures 5/6/7/4/5/6cm, increase 1 stitch on each side of marker thread in each side - read the Increase Tip! Increase like this every 8/8/8/9/9/9cm 5 times in total = 192/204/216/232/248/272 stitches. When piece measures 41/42/43/44/45/46cm, cast off 4 stitches for armhole in each side (= 2 stitches on each side of marker thread). Work front and back piece back and forth separately.

Back Piece

= 86/92/98/106/114/126 stitches (including 1 edge stitch in each side). Continue in stocking stitch as before with 1 edge stitch in Garter Stitch - see explanation above, in each side. When piece measures 59/61/63/65/67/69cm, cast off the middle 24/24/26/26/26/28 stitches for neck and finish each shoulder separately. Cast off 1 stitch on next row from neck = 30/33/35/39/43/48 stitches remain on the shoulder. Continue to work until piece measures 61/63/65/67/69/71cm. Work 1 ridge and cast off - read Cast-Off Tip. Piece measures approx. 62/64/66/68/70/72cm. Work the other shoulder the same way.

Front Piece

= 98/104/110/118/126/138 stitches (including 1 edge stitch in each side). Continue the pattern as before with 1 edge stitch in garter stitch in each side. When piece measures 56/58/60/61/63/65cm, decrease 12 stitches evenly over A.2 - remember Decrease/Increase Tip = 86/92/98/106/114/126

stitches. On next row slip the middle 12/12/14/14/14/16 stitches on 1 stitch holder for neck and finish each shoulder separately in stocking stitch, work edge stitch as before. Cast off for neck at the beginning of every row from neck as follows: 2 stitches 2 times and 1 stitch 3 times = 30/33/35/39/43/48 stitches remain on shoulder. Continue to work until piece measures 61/63/65/67/69/71cm. Work 1 ridge in garter stitch and cast off. Piece measures approx. 62/64/66/68/70/72cm. Work the other shoulder the same way.

Sleeve

Work sleeve in the round on double pointed needles/a short circular needle.

Cast on 48/50/54/56/58/58 stitches on double pointed needles size 4,5mm with Air. Knit 1 round. Then work rib (= knit 1/purl 1) for 3cm. Switch to double pointed needles size 5.5 mm, knit 1 round while decreasing 10/10/12/12/14/14 stitches evenly = 38/40/42/44/44/44 stitches. Insert 1 marker at beginning of round (= mid under sleeve) and move the marker upwards. Then work in stocking stitch. When piece measures 9/8/11/10/12/8cm, increase 2 stitches mid under sleeve - remember Increase Tip! Increase like this every 6th/6th/5th/5th/4th/4th round 15/15/16/16/18/19 times in total = 68/70/74/76/80/82 stitches. When piece measures 55/54/53/52/50/47cm, cast off all stitches.

Assembly

Sew shoulder seams inside cast-off edges so that there are 2 ridges on top of shoulder. Sew in sleeves inside 1 edge stitch in garter stitch.

Neck

Pick up from right side approx. 78-100 stitches around the neck (including stitches on stitch holder at the front) on a short circular needle size 4,5mm. Purl 1 round. Knit 1 round while adjusting number of stitches to 78/78/84/84/90/90. Then work rib (= knit 1/purl 1) for 12cm. Then purl 1 round from wrong side, cast off. Fold the neck inwards so that it is 6cm high. Fasten it with neat little stitches inside the jumper.

Source

[Original Pattern](#)